

Reeve School of Motoring

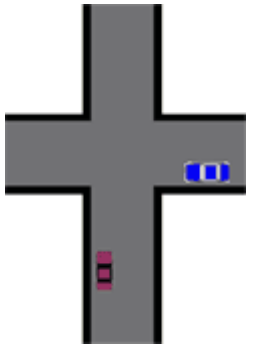
How to Do: Crossroads

Before learning about crossroads you will have learnt to deal with approaching and emerging from junctions to turn left and right. In this tutorial you will be introduced to some of the different types of crossroads that you will encounter and see what makes them more complex than T junctions.

Crossroads can be accident black spots and extra care must be taken where the traffic is fast moving or vehicles will be turning right.

When you arrive at any crossroad you will have the choice of turning left, right or going straight ahead. How you deal with them will depend on whether they are controlled or uncontrolled.

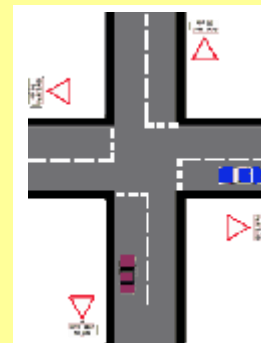
Types of Crossroads. Uncontrolled Crossroads.



When you approach any crossroad you must be looking for any indication of which is the priority road, in this picture you can see that there are no signs or markings indicating any priority which is why these are often referred to as unmarked crossroads.

These crossroads must be approached with extreme caution, you must make effective observations and only make a manoeuvre when you are absolutely sure that it is safe to do so.

It is a good rule of thumb to approach an unmarked crossroad as if there were give way signs or markings showing against you and deal with it accordingly.



Controlled Crossroads

Crossroads can be controlled in a variety of ways:

This is a picture of a crossroads controlled by traffic lights - when you approach this type of crossroad it is still important to make the normal observations. Even if the traffic lights in your direction of travel are showing green (remember that a green light does not just mean "go" - it means "proceed if it is safe to do so"), you must still check that no vehicles are emerging from the left or right and be aware that emergency vehicles may be approaching. You might occasionally come across a traffic light controlled crossroads where the lights are not working - in this case you must exercise great caution and treat it as if it were an uncontrolled crossroads.

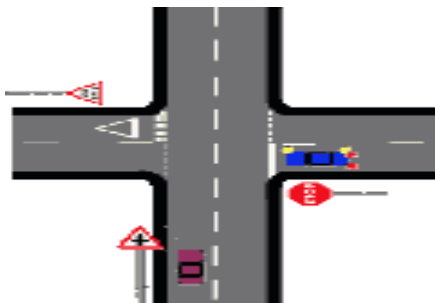


Crossroads can also be controlled by roundabouts - there are special rules relating to roundabouts which has been covered in the roundabout tutorial.



And they can be controlled by road signs and markings - this type of crossroad is commonly referred to as a "marked crossroad" and it is marked crossroads that we will be concentrating on in this tutorial.

You should by now becoming familiar with using the MSM routine on the approach to hazards - let's remind ourselves of the routine and see how to apply it on the approach to some marked crossroads.



Remember. We will go through this thoroughly on our driving lessons